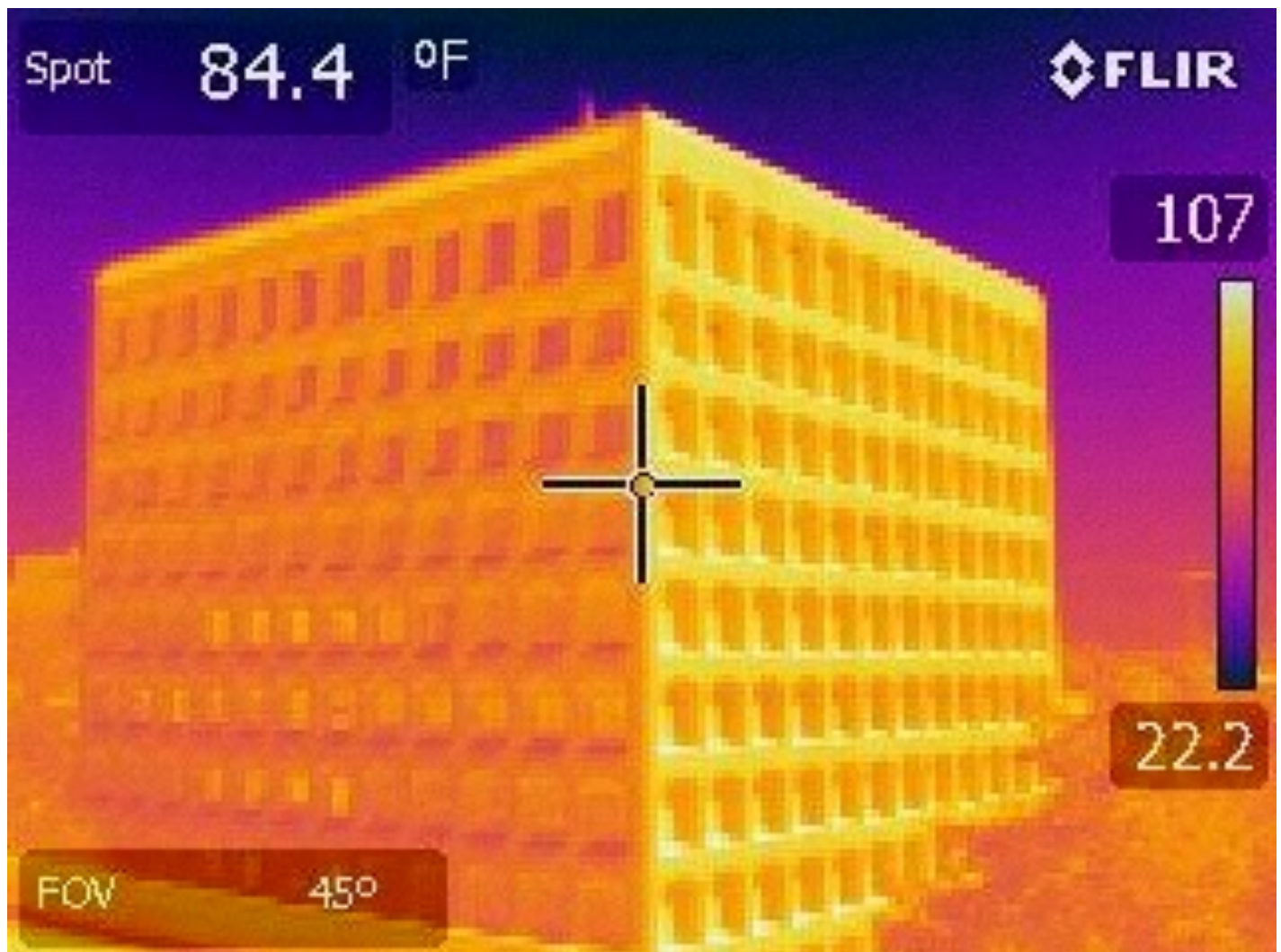




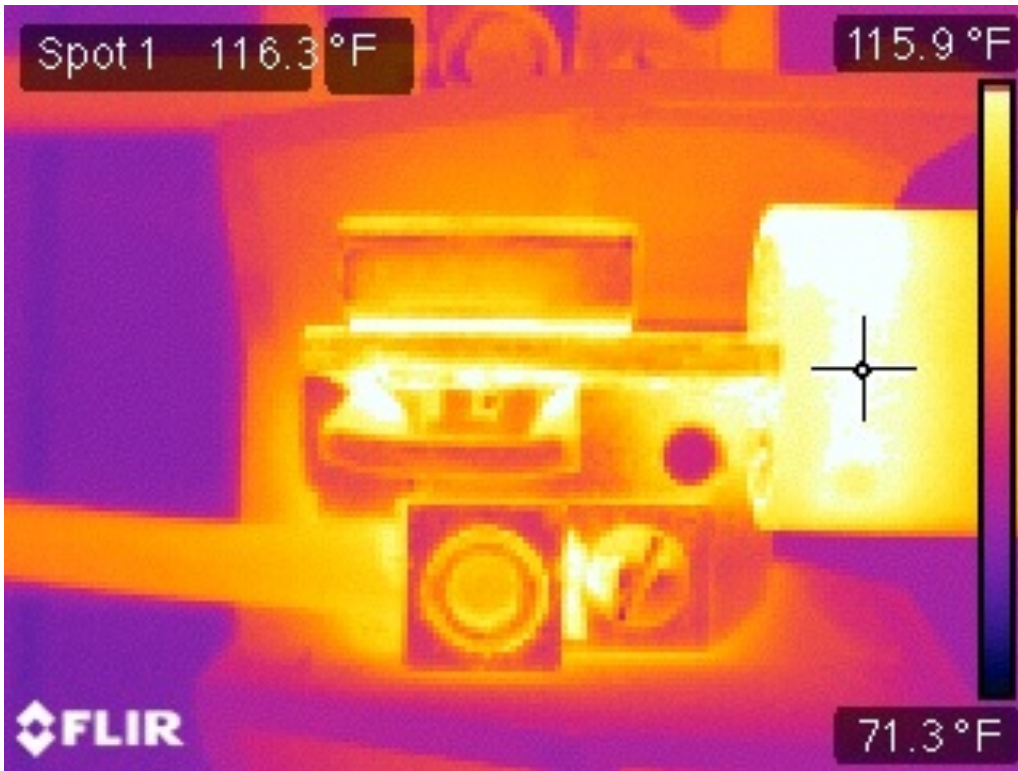
1441 Oak St. #4
Eugene, OR 97401

T 541-357-7743
F 541-686-3362
luke@orhomeinspections.com
www.orhomeinspection.com

High-Rise Building In Eugene, OR 08/28/2014



High-Rise Building in Eugene, OR 08/28/2014



LOCATION: 10th Floor north electrical room.

EQUIPMENT: MCC 2 Fused disconnect.

NOTE: Disconnect fuse temps are elevated on the left side of the fuse. Amp meter readings were 32 Amps on the associated conductor and 11 Amps on the adjacent conductor.

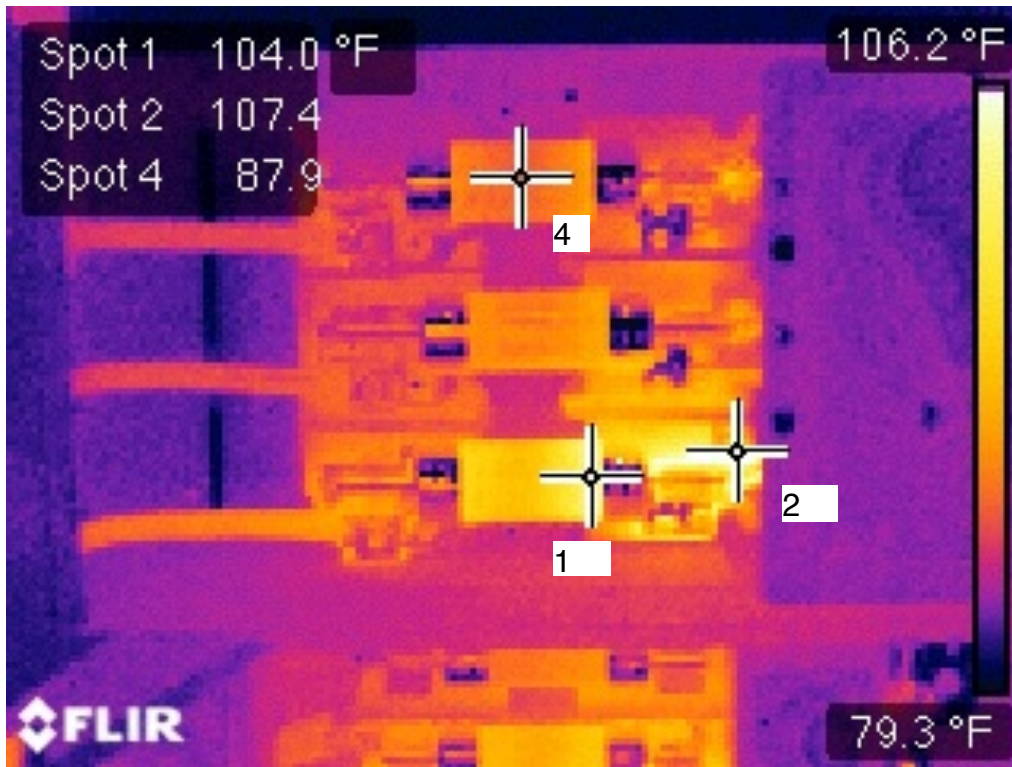
PARAMETERS	
Emissivity	0.78
Reflective temperature	77
Distance	3.28
Relative humidity	50%
Atmospheric temperature	68
Transmission	0.9
IR window temperature	N/A
IR window transmission	N/A

MEASUREMENTS	
Spot 1	116.3
Spot 2	
Spot 3	
Spot 4	

IMAGE INFORMATION	
Camera:	FLIR E40
Lens:	FOV 45 Degrees
Image Size:	320 X 240
File Size:	107 KB



High-Rise Building in Eugene, OR 08/28/2014



LOCATION: 9th Floor north electrical room

EQUIPMENT: 9L electrical panel.

NOTE: Elevated temp in neutral conductor. Scofield removed damaged section on conductor and re0installed conductor on neutral bus bar.

PARAMETERS	
Emissivity	0.95
Reflective temperature	96
Distance	3.28
Relative humidity	50%
Atmospheric temperature	68
Transmission	0.9
IR window temperature	N/A
IR window transmission	N/A

MEASUREMENTS	
Spot 1	104
Spot 2	107
Spot 3	
Spot 4	87

IMAGE INFORMATION	
Camera:	FLIR E40
Lens:	FOV 45 Degrees
Image Size:	320 X 240
File Size:	107 KB



High-Rise Building in Eugene, OR 08/28/2014



LOCATION: Mechanical room.

EQUIPMENT: MCC, condenser water pump #2

NOTE: Elevated temp on middle contact. Further evaluation recommended to determine source of heat.

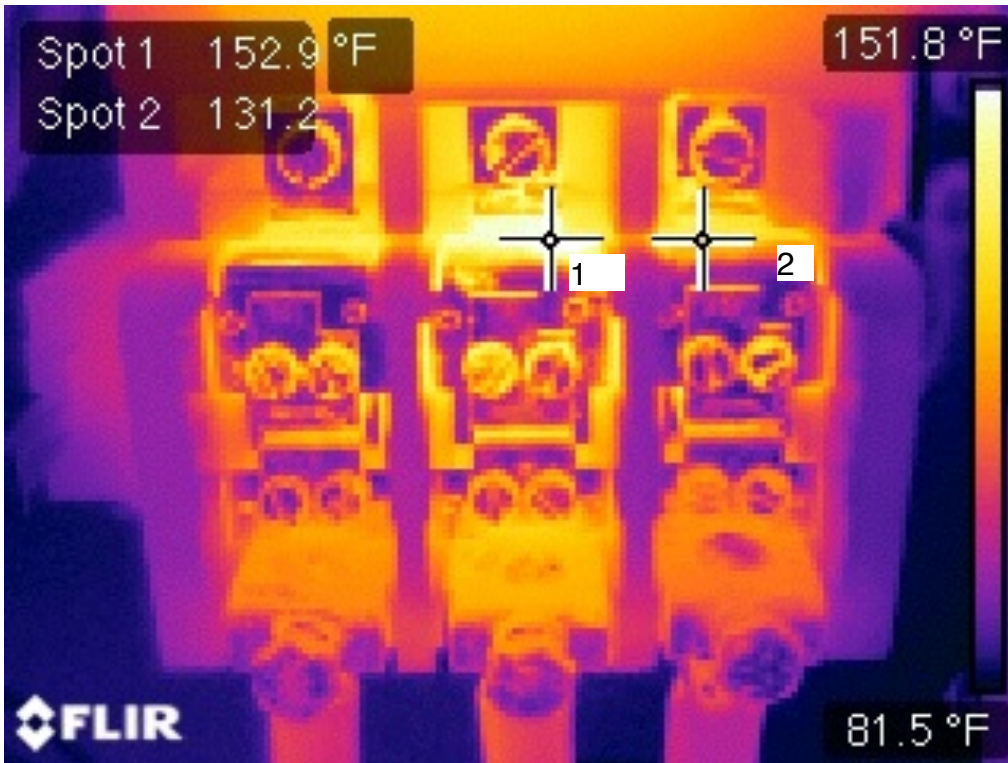
PARAMETERS	
Emissivity	0.95
Reflective temperature	86
Distance	3.28
Relative humidity	50%
Atmospheric temperature	68
Transmission	0.9
IR window temperature	N/A
IR window transmission	N/A

MEASUREMENTS	
Spot 1	92
Spot 2	1
Spot 3	
Spot 4	

IMAGE INFORMATION	
Camera:	FLIR E40
Lens:	FOV 45 Degrees
Image Size:	320 X 240
File Size:	107 KB



High-Rise Building in Eugene, OR 08/28/2014



LOCATION: Mechanical room.

EQUIPMENT: MCC, chiller #2, compressor.

NOTE: Elevated temp in contactor lead fastener (bolt). Spot #1 on far left of image.

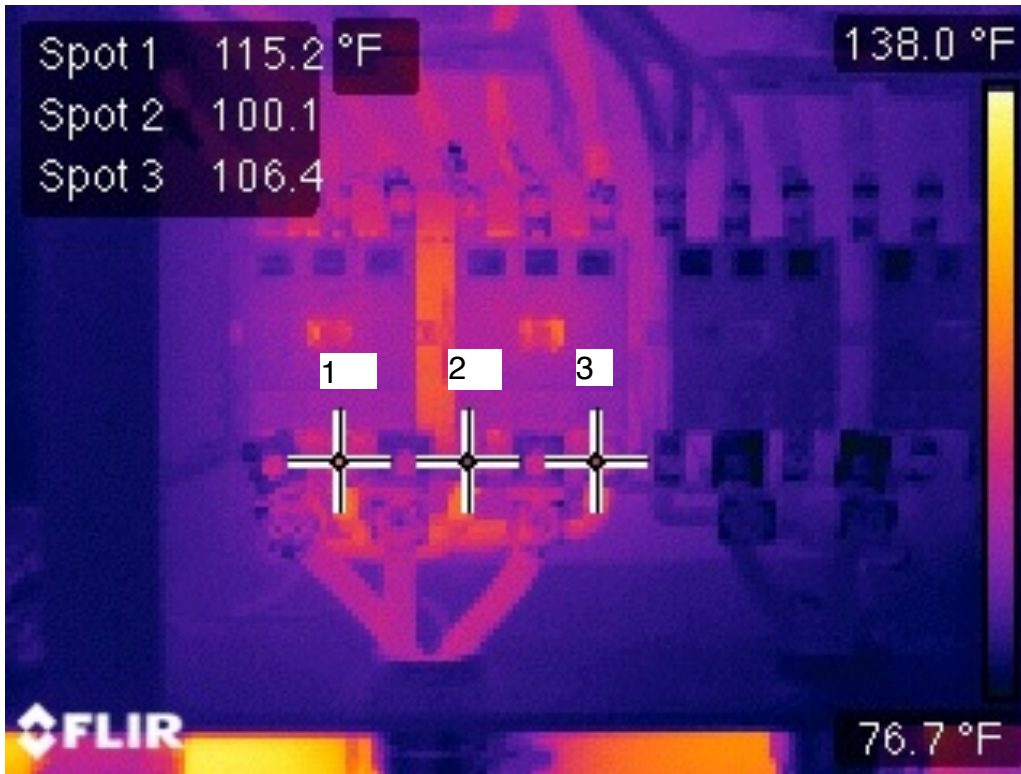
PARAMETERS	
Emissivity	0.95
Reflective temperature	86
Distance	3.28
Relative humidity	50%
Atmospheric temperature	68
Transmission	0.9
IR window temperature	N/A
IR window transmission	N/A

MEASUREMENTS	
Spot 1	152
Spot 2	131
Spot 3	106
Spot 4	

IMAGE INFORMATION	
Camera:	FLIR E40
Lens:	FOV 45 Degrees
Image Size:	320 X 240
File Size:	107 KB



High-Rise Building in Eugene, OR 08/28/2014

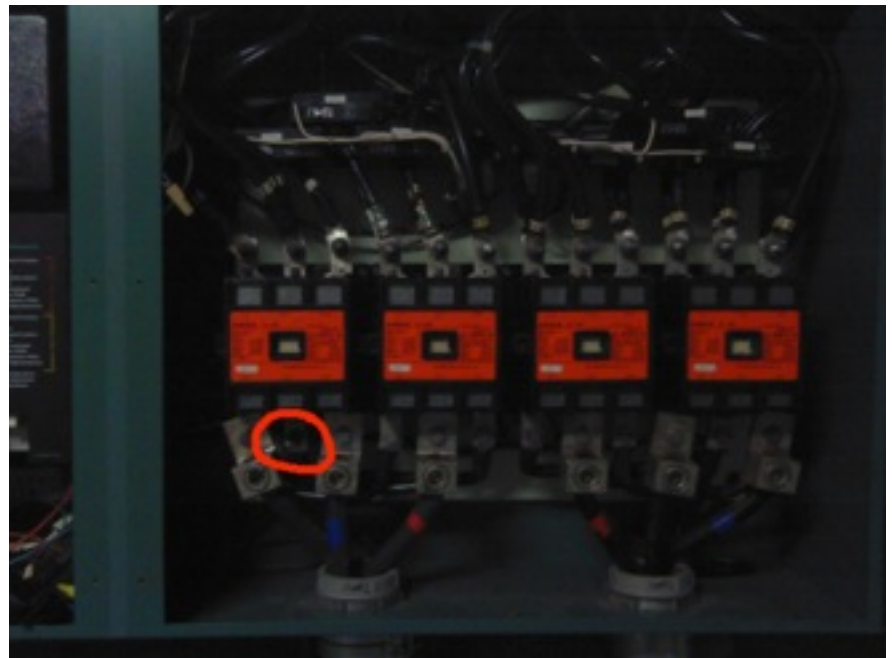


LOCATION: Basement mechanical room.
EQUIPMENT: Chiller #2, bottom block, fused disconnect
NOTE: Top two fuses are warmer than lower fuse. Note that the top two fuses are made by the same manufacture and the bottom is made by a different manufacture. Could just be difference in operating temps between the different manufactures.

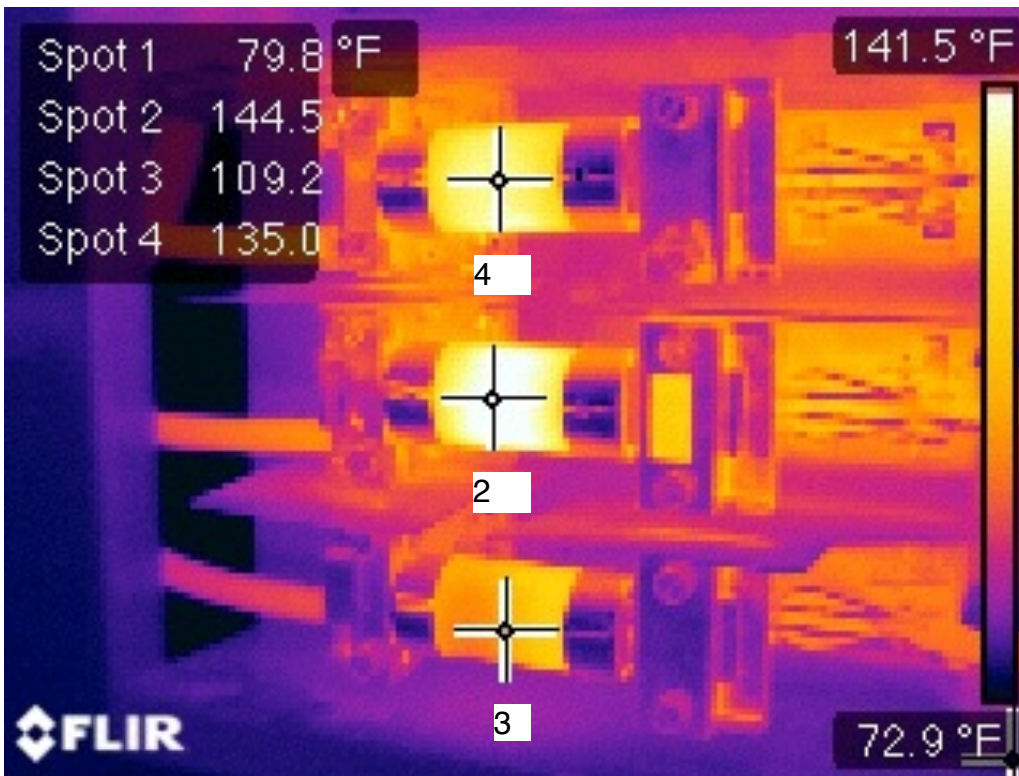
PARAMETERS	
Emissivity	0.95
Reflective temperature	86
Distance	3.28
Relative humidity	50%
Atmospheric temperature	68
Transmission	0.9
IR window temperature	N/A
IR window transmission	N/A

MEASUREMENTS	
Spot 1	115
Spot 2	100
Spot 3	106
Spot 4	

IMAGE INFORMATION	
Camera:	FLIR E40
Lens:	FOV 45 Degrees
Image Size:	320 X 240
File Size:	107 KB



High-Rise Building in Eugene, OR 08/28/2014



LOCATION: Basement, main electrical room.

EQUIPMENT: South chiller disconnect.

NOTE: Middle contacts (Spot #1) are showing elevated temps.

PARAMETERS	
Emissivity	0.79
Reflective temperature	86
Distance	3.28
Relative humidity	50%
Atmospheric temperature	68
Transmission	0.9
IR window temperature	N/A
IR window transmission	N/A

MEASUREMENTS	
Spot 1	79
Spot 2	144
Spot 3	109
Spot 4	NA

IMAGE INFORMATION	
Camera:	FLIR E40
Lens:	FOV 45 Degrees
Image Size:	320 X 240
File Size:	120 KB



High-Rise Building in Eugene, OR 08/28/2014



LOCATION: Basement, main electrical room.

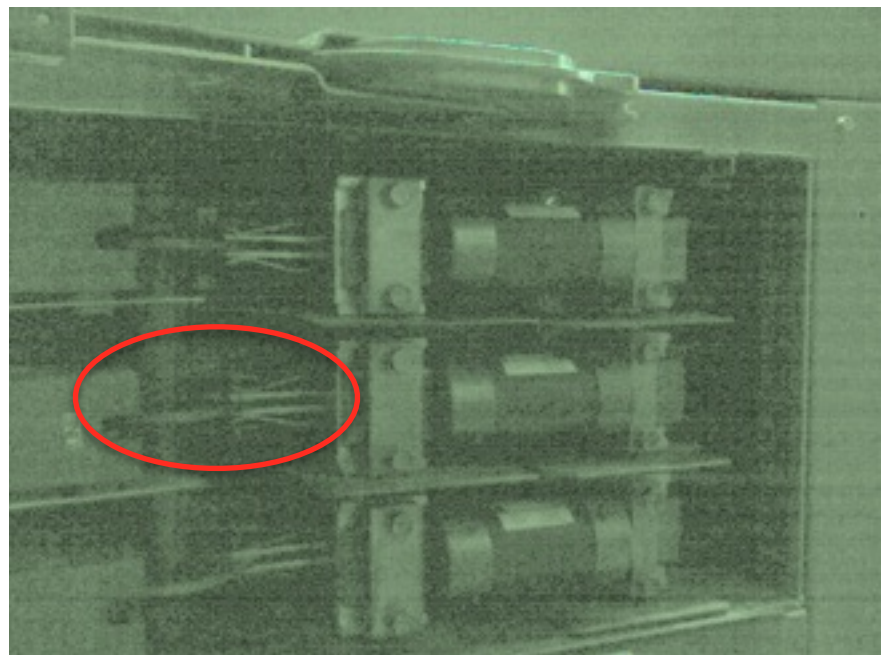
EQUIPMENT: Main service disconnect for building.

NOTE: No issues noted.

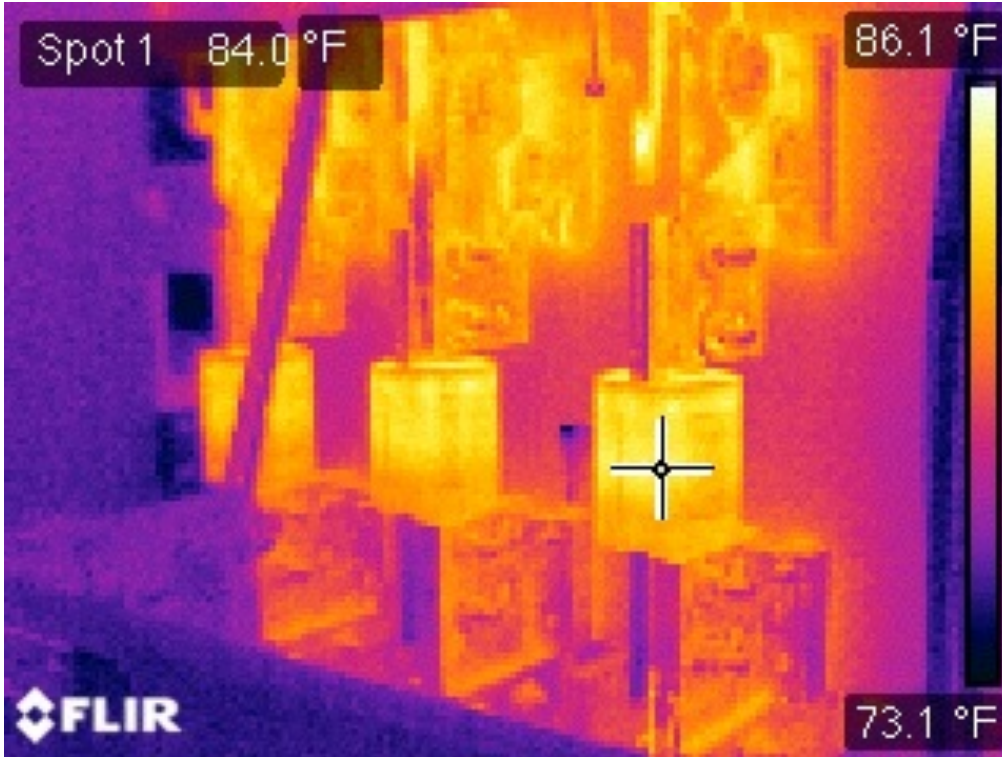
PARAMETERS	
Emissivity	0.79
Reflective temperature	86
Distance	3.28
Relative humidity	50%
Atmospheric temperature	68
Transmission	0.9
IR window temperature	N/A
IR window transmission	N/A

MEASUREMENTS	
Spot 1	171
Spot 2	155
Spot 3	
Spot 4	

IMAGE INFORMATION	
Camera:	FLIR E40
Lens:	FOV 45 Degrees
Image Size:	320 X 240
File Size:	120 KB



High-Rise Building in Eugene, OR 08/28/2014



LOCATION: Basement, main electrical room.

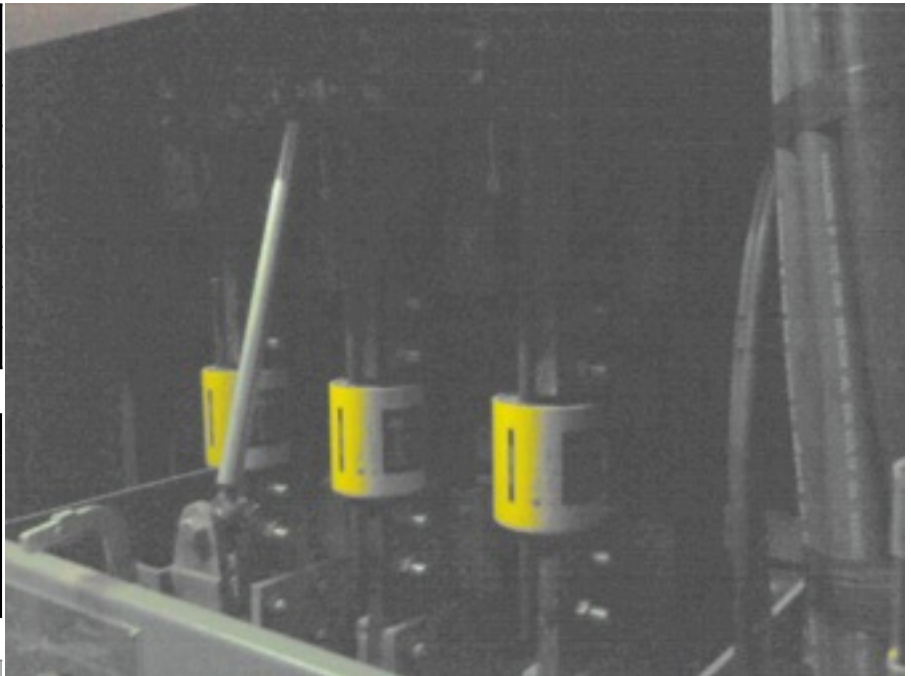
EQUIPMENT: Mechanical room disconnect.

NOTE: No issues noted.

PARAMETERS	
Emissivity	0.95
Reflective temperature	86
Distance	3.28
Relative humidity	50%
Atmospheric temperature	68
Transmission	0.9
IR window temperature	N/A
IR window transmission	N/A

MEASUREMENTS	
Spot 1	84
Spot 2	
Spot 3	
Spot 4	

IMAGE INFORMATION	
Camera:	FLIR E40
Lens:	FOV 45 Degrees
Image Size:	320 X 240
File Size:	120 KB



High-Rise Building in Eugene, OR 08/28/2014



LOCATION: Basement, main electrical room.

EQUIPMENT: Main Electrical disconnect for the building.

NOTE: No issues noted.

PARAMETERS	
Emissivity	0.95
Reflective temperature	86
Distance	3.28
Relative humidity	50%
Atmospheric temperature	68
Transmission	0.9
IR window temperature	N/A
IR window transmission	N/A

MEASUREMENTS	
Spot 1	84
Spot 2	
Spot 3	
Spot 4	

IMAGE INFORMATION	
Camera:	FLIR E40
Lens:	FOV 45 Degrees
Image Size:	320 X 240
File Size:	120 KB

